

# 2A, 1A Volleyball

November 3-4, 2017 \* Ridgeview HS \* Redmond



# BEST TIRE VALUE PROMISE<sup>®</sup>



## VALUE THAT GETS BETTER BY THE MILE.

### OUR PROMISE INCLUDES

#### PEACE OF MIND TIRE PROTECTION

- If a Tire is Damaged Beyond Repair, We'll Replace its Value.
- We Guarantee Our Work for the Life of Your Tires.
- Free Pre-Trip Safety Checks

#### FREE LIFETIME TIRE & MILEAGE CARE

- Flat Tire Repairs
- Tire Rotations & Rebalancing
- Tire Pressure Checks
- Brake & Alignment Checks



Doing the right thing matters.<sup>®</sup>

# OSAA / U.S. BANK / LES SCHWAB TIRES STATE CHAMPIONSHIPS



Welcome to the OSAA / U.S. Bank / Les Schwab Tires State Championships!

At the OSAA we believe high school activities provide opportunities for young people to receive a well-rounded education that challenges both mind and body. These opportunities enrich and expand our students' school experience and help them become contributing members of society.

Participation in activities teaches students how to be part of something bigger than themselves; the meaning of respect for themselves and others; and skills like grit, resilience, patience and the ability to collaborate with peers. They also learn how to fail and, more importantly, how to turn adversity into success through effort.

Congratulations to students, coaches, schools and communities who earned the right to participate in this state championship! And a special thanks to U.S. Bank and Les Schwab Tires for sharing our belief in the value of high school activities through their continued financial commitment. Together, we remain steadfast in our efforts to provide opportunities for students to experience these valuable lessons.

Thank you for your continued support of Oregon high school activities!

**Peter Weber**  
Executive Director, OSAA



On behalf of U.S. Bank, welcome to today's Oregon School Activities Association state championship!

We believe in building strong communities where we live and work. One way we demonstrate this commitment in Oregon is by supporting OSAA programs, which promote leadership, teamwork and sportsmanship in young people. Since 1984, U.S. Bank has been proud to support the OSAA and its 290 member schools, with more than four million dollars in contributions to date.

We extend our congratulations to all of the participants, coaches, families and fans here today. We look forward to our continued partnership with you in support of Oregon's young people

**Stacey Dodson**  
President, U.S. Bank  
Portland and Southwest Washington



**Welcome!**

**Teamwork.  
Responsibility.  
Accomplishment.**

Whether students are shooting for the hoop, marching in time or aiming for the end zone, they are practicing skills that will serve them well in school, on the job and in life.

At Les Schwab Tire Centers, we are proud of the players and performers of the OSAA. We are also excited to celebrate our 16<sup>th</sup> year of being a title sponsor. We believe in supporting students as they learn about commitment, hard work and serving the community — values the company believes in.

Today, throughout the state there are 295 high schools serving over 160,000 students. These schools help provide valuable education for our youth both in and outside the classroom to help make Oregon a better place to live. Thank you for being here and for supporting our great young people.

Les Schwab, *Doing the right thing matters.*







***WE BELIEVE  
IN CHANGING MORE  
THAN JUST TIRES.***

Our values aren't just something we talk about, they're something we act on. We are proud to be a title sponsor of the OSAA Volleyball Championships! It's a great way for them to grow and learn the same sense of hard work and integrity that makes our state, and Les Schwab, strong.

[www.LesSchwab.com](http://www.LesSchwab.com)



Doing the right thing matters.®



# POP QUIZ:

Why do top athletes  
drink milk?

- a) Nutrients
- b) Protein
- c) Fueling and refueling
- d) Performance
- e) Hydration

Answer: All the above.

Learn how milk makes  
the grade at:  
[osaa.org/health-safety](http://osaa.org/health-safety)



# OSAA



25200 SW Parkway Avenue, Suite 1  
Wilsonville, OR 97070-9616

[www.osaa.org](http://www.osaa.org)

## About the OSAA

The OSAA is comprised of 290 member high schools representing more than 200 Oregon communities. A private non-profit, board-governed association, the OSAA is sanctioned by the Oregon State Board of Education and is a member of the National Federation of State High School Associations (NFHS).

## It's History

The OSAA began in 1918 when administrators from 36 schools recognized a need for an organization to coordinate and regulate high school interscholastic competition. Thus the Oregon State High School Athletic Association was formed. The name was changed in 1947 to reflect the inclusion of activities outside of traditional athletics.

## Mission Statement

The mission of the OSAA is to serve member schools by providing leadership and state coordination for the conduct of interscholastic activities, which will enrich the educational experiences of high school students. The OSAA will work to promote interschool activities that provide equitable participation opportunities, positive recognition and learning experiences to students, while enhancing the achievement of educational goals.

## What the OSAA Does

Much like the NCAA at the collegiate level, the OSAA regulates the eligibility and competition of all high school students in the state. This includes everything from determining which league a school will compete in to sponsoring and administering state championships.

## Funding

As a private, non-profit organization, the OSAA does not receive any state funding. Revenue is generated from three sources: school membership fees, state championship gate receipts and corporate sponsors.

## OSAA Activities

The OSAA sponsors 116 state championships for students competing in 19 interscholastic activities:

### Fall

Cross Country, Volleyball, Soccer, Football

### Winter

Cheerleading, Wrestling, Swimming, Basketball, Dance/Drill

### Spring

Speech, Solo Music, Choir, Band/Orchestra  
Golf, Tennis, Track & Field, Softball, Baseball

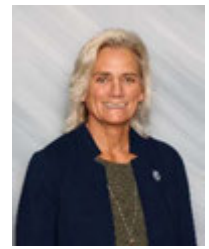
# EXECUTIVE BOARD



**Don Grotting**  
Superintendent  
David Douglas SD  
6A



**Mark Hannan (Pres.)**  
Principal  
Silverton HS  
5A



**Krista Parent**  
Superintendent  
South Lane SD  
4A



**Tim France**  
Principal  
Willamina HS  
3A



**Jeff Clark (V.P.)**  
Principal  
Oakland HS  
2A



**Jack Henderson**  
Superintendent  
Dufur SD  
1A



**Mark Witty**  
Superintendent  
Baker SD  
6A/5A/4A At-Large



**Heidi Sipe**  
Superintendent  
Umatilla SD  
3A/2A/1A At-Large



**Sherry Duerst-Higgins**  
School Board  
Lane County ESD  
OSBA



**Mark Horak**  
Athletic Director  
West Linn HS  
OADA



**Mary Lou Boderman**  
Coordinator Music &  
Drama  
Salem-Keizer SD  
Activities



**John Beck**  
Coach  
Crater HS  
OACA



**Jack Folliard**  
Executive Director  
OAOA

**OREGON SCHOOL ACTIVITIES ASSOCIATION**  
**2017-18 Delegate Assembly**

DISTRICT	TERM EXP		NAME	POSITION	SCHOOL / DISTRICT
6A-1 Portland Interscholastic League	2020	*	Brian Chatard	Principal	Wilson HS
6A-2 Metro League	2020	**EB	Don Grotting	Superintendent	Beaverton SD
6A-3 Mt. Hood Conference	2019		Ken Richardson	Superintendent	David Douglas SD
6A-4 Three Rivers League	2018		Ken Bell	Principal	Sherwood HS
6A-5 Greater Valley Conference	2020	**	Susie Orsborn	Principal	West Albany HS
6A-6 Southwest Conference	2018	**	Russ Bolin	Administrator	Roseburg HS
5A-1 Northwest Oregon Conference	2018	**	Mark Pinder	Principal	Milwaukie HS
5A-2 Mid-Willamette Conference	2019	**EB	Mark Hannan	Administrator	Silver Falls SD
5A-3 Midwestern League	2018		Kelly Bokn	District Athletic Director	Eugene SD
5A-4 Intermountain Conference	2020	*	Mike McIntosh	Superintendent	Redmond SD
5A-5 Columbia River Conference	2019		Rich Polkinghorn	Principal	Hood River Valley HS
4A-1 Cowapa League	2020	**	Jim Jones	Principal	Scappoose HS
4A-2 Tri-Valley Conference	2018		Ryan Carpenter	Superintendent	Estacada SD
4A-3 Far West League	2020	*	Andy Grzeskowiak	Superintendent	Siuslaw SD
4A-4 Oregon West Conference	2020	*	Heidi Hermansen	Assistant Principal	Cascade HS
4A-5 Sky-Em League	2019		Curtiss Scholl	Superintendent	Sisters SD
4A-6 Skyline Conference	2020	*	Erik Lathen	Principal	North Valley HS
4A-7 Greater Oregon League	2019	EB	Mark Witty	Superintendent	Baker SD
3A-1 Lewis & Clark League	2019	**	Graden Blue	Principal	Rainier HS
3A-2 West Valley League	2018	EB	Tim France	Principal	Willamina HS
3A-3 PacWest Conference	2020	*	Cathy Emmert	Principal	Jefferson HS
3A-4 Mountain Valley Conference	2018	**	Tony Jones	Administrator	Coquille SD
3A-5 Eastern Oregon League	2018		Marie Shimer	Director of Ed Services	Morrow County SD
3A-6 Southern Cascade League	2020	*	Rusty Zysett	Vice Principal	Lakeview HS
2A-1 Northwest League	2020	*	Misty Wharton	Superintendent	Nestucca Valley SD
2A-2 Tri-River Conference	2020	**	David Plotts	Principal	Santiam HS
2A-3 Mountain View Conference	2018	EB	Jeff Clark	Principal	Oakland HS
2A-4 Sunset Conference	2020	*	Brandon Standridge	Assistant Principal	Bandon HS
2A-5 Columbia Basin Conference	2019		Matt Combe	Principal	Heppner HS
2A-6 Wapiti League	2018	**	Curt Shelley	Superintendent	John Day SD
1A-1 The Valley 10 League	2018		Mark Sherman	Vice Principal	Southwest Christian HS
1A-2 Casco League	2018	**	Adam Kronberger	Principal	Crosshill Christian School
1A-3 Mountain West League	2020	*	Marc Thielman	Superintendent	Alsea SD
1A-4 Skyline League	2019		Scott Yakovich	Principal	North Douglas HS
1A-5 Mountain Valley League	2019	**	Steve Prock	Principal	Gilchrist HS
1A-6 Big Sky League	2019		Jim Smith	Principal	Wheeler HS
1A-7 Old Oregon League	2018	**	Lance Dixon	Superintendent	North Powder SD
1A-8 High Desert League	2020	*	Kevin Purnell	Principal	Adrian HS
Oregon School Boards Assn	2020	*EB	Sherry Duerst-Higgins	School Board	Lane County ESD
Oregon Athletic Directors Assn	2019	EB	Mark Horak	Athletic Director	West Linn HS
Activities Advisory Committee	2019	EB	Mary Lou Boderman	Coord of Music/Drama	Salem-Keizer SD
Oregon Athletic Coaches Assn	2020	*EB	John Beck	Coach	Crater HS
Oregon Athletic Officials Assn	2019	EB	Jack Foliard	Executive Director	Officials Association

\* Newly elected    \*\* Re-elected  
(EB) OSAA Executive Board Member



October 17, 2017





Kids who **play** grow  
into healthy adults.

*Proud sponsor of the OSAA*





#opreps

**SUN DAY**  
**MON DAY**  
**TUES DAY**  
**WEDNES DAY**  
**THURS DAY**  
**GAME DAY**

Who's dominating? Who's a force to watch? Get the story on OREGONLIVE, with statewide high school sports coverage all week long.

**Follow Oregon's top teams and student athletes with:**

- ★ game previews and live coverage
- ★ player and team rankings
- ★ exclusive photos and videos
- ★ reader polls and more

And on Fridays, get the view from the field with in-depth reporting from our Game of the Week.

Catch This Week's Action:

**OREGONLIVE.COM/prep**

**P•R•E•P**  
**SPORTS**

The Oregonian OREGONLIVE





**PROUD TO BE  
THE OFFICIAL  
MERCHANTISER  
OF THE**



**Please visit our onsite  
merchandise booth  
or online store  
Customer service  
503-227-2051**



[www.sportsustore.com](http://www.sportsustore.com) or [www.osaastore.com](http://www.osaastore.com)



Wilson®

# THE OFFICIAL BALL OF THE OSAA.

**OSAA**  
State  
Championships  
U.S. BANK LES SCHWAB TIRES



**I-COR™ HIGH PERFORMANCE**  
WTH7700XBLSI

**EVOLUTION™ GAME BALL**  
WTB0516

**A1010HS1**  
WTA1010BPROSST

**A9011**  
WTA9011BSST

**NCAA™ 1003 GST™**  
WTF1003

# Central Linn Cobras



## VARSITY ROSTER

No.	Name	Pos.	Yr.	Ht.
1	Sarah Conner	DS	11	5-4
2	Morgan Robb	OH	12	5-3
3	Sydney Northern	MB	10	5-10
6	Payton Holt	OH	10	5-5
7	Kaylee Owens	DS/OH	11	5-4
8	Clara Nealon	DS	12	4-10
11	Gracie Robb	S/RS	10	5-2
12	Hana Harris	OH	12	5-9
13	Makenna Northern	S/OH	12	5-10
14	Colleen McLaughlin	S/RS	11	5-5
20	Josie Nealon	L	9	5-0
26	Sydney Tindall	MB	12	6-2

## SCHEDULE (20-3)

Date	Opponent	Result
8/31	@ Delphian	W 3-0
8/31	vs. Vernonia	W 3-0
9/5	vs. East Linn Christian Acad.	W 3-0
9/7	@ Kennedy	W 3-2
9/9	vs. Grant Union	L 0-2
9/9	@ Reedsport	W 2-0
9/9	@ Oakridge	W 2-0
9/11	@ Harrisburg	W 3-1
9/12	@ Western Mennonite	W 3-0
9/14	vs. St. Paul	W 3-2
9/18	vs. Neah-Kah-Nie	W 3-0
9/21	vs. Santiam	W 3-0
9/25	vs. Jefferson	W 3-0
9/26	@ Regis	W 3-0
9/28	@ East Linn Christian Acad.	W 3-0
10/2	vs. Toledo	W 3-0
10/3	vs. Kennedy	L 2-3
10/5	vs. Western Mennonite	W 3-0
10/10	@ St. Paul	W 3-1
10/16	@ Santiam	W 3-0
10/18	vs. Regis	W 3-1
10/24	vs. Kennedy	L 2-3
10/28	vs. Delphian	W 3-0
11/3	vs. St. Paul	

**League** 2A-2 (2014-2017) Tri-River Conference  
**Location** Halsey  
**Mascot** Cobras  
**Colors** Blue, Scarlet, White

**Superintendent** Brian Gardner  
**Principal** Jon Zwemke  
**Athletic Director** Robyn Bailey



**Head Coach** Kaela MIsna

# Culver Bulldogs



## VARSITY ROSTER

No.	Name	Pos.	Yr.	Ht.
1	Irma Retano		11	
2	Margie Beeler		12	
3	Bridget Lopez		10	
5	Avery Oppenlander		11	
6	Carley Pewonka		11	
7	Rosi Olivera		11	
8	Ryanne Scholl		11	
9	Mia Gamboa		11	
10	Maddie Miller		11	
11	Catylynn Duff		12	
12	Claire Bender		9	
13	Janae Rhen		10	

## SCHEDULE (24-2)

Date	Opponent	Result
8/26	@ Delphian	W 2-1
8/26	vs. Amity	W 2-1
8/30	vs. Ridgeview	L 0-3
9/5	@ Grant Union	W 3-2
9/7	vs. Madras	W 3-0
9/9	vs. Monroe	W 2-0
9/9	@ Country Christian	W 2-0
9/12	@ La Pine	W 3-0
9/14	@ Heppner	W 3-0
9/16	vs. St. Paul	W 3-1
9/16	@ Dufur	W 3-0
9/19	vs. Weston-McEwen	W 3-0
9/21	vs. Pilot Rock	W 3-0
9/23	vs. Oakridge	W 2-0
9/23	@ Days Creek	W 2-0
9/23	vs. North Douglas	W 3-0
9/26	vs. Stanfield	W 3-0
10/3	vs. Heppner	L 2-3
10/5	@ Weston-McEwen	W 3-0
10/7	vs. Scappoose	W 2-1
10/7	vs. Estacada	W 2-0
10/7	vs. Hidden Valley	W 2-1
10/10	@ Pilot Rock	W 3-0
10/12	@ Stanfield	W 3-0
10/21	vs. Heppner	W 3-0
10/28	vs. Imbler	W 3-0
11/3	vs. Heppner	

**League** 2A-5 (2014-2017) Columbia Basin Conference

**Location** Culver

**Mascot** Bulldogs

**Colors** Black, Orange

**Superintendent** Stefanie Garber

**Principal** Brad Kudlac

**Athletic Director** Shea Little



**Head Coach** Randi Viggiano



# Gaston Greyhounds



## VARSITY ROSTER

No.	Name	Pos.	Yr.	Ht.
2	Julia Clark	S	12	
3	Icis McQueen	OH	12	
4	Taylor Bassel	OH	12	
5	Hannah Raines	S	11	
6	Charity Hall	MB	12	
7	Daisy Clark	S	12	
8	Isabell Gomez	DS	11	
14	Blessing Mackenzie	OH	10	
24	Brooke Jordan	MB	11	
25	Kelsey Richardson	MB	10	

## SCHEDULE (18-2)

Date	Opponent	Result
8/28	vs. Toledo	W 3-0
8/31	vs. Waldport	W 3-0
9/5	vs. Knappa	W 3-0
9/7	vs. Columbia Christian	W 3-1
9/12	vs. Faith Bible	W 3-0
9/14	@ Neah-Kah-Nie	W 3-0
9/16	vs. Clatskanie	W 2-0
9/16	vs. Warrenton	W 2-0
9/19	@ City Christian	W 3-0
9/21	@ Nestucca	W 3-0
9/23	vs. Creswell	L 0-2
9/26	vs. Delphian	W 3-0
9/28	vs. Neah-Kah-Nie	W 3-0
10/3	@ Delphian	W 3-1
10/5	@ Faith Bible	W 3-0
10/7	vs. Hidden Valley	L 0-2
10/10	@ Vernonia	W 3-2
10/14	vs. Nestucca	W 3-0
10/21	@ Vernonia	W 3-0
10/28	vs. Bonanza	W 3-0
11/3	@ Kennedy	

**League** 2A-1 (2014-2017) Northwest League  
**Location** Gaston  
**Mascot** Greyhounds  
**Colors** Green, Gold



**Head Coach** Melody McMasters  
**Assistant Coaches** Mike Asuncion, Hilary Lowery

**Superintendent** Susy McKenzie  
**Principal** Summer Catino  
**Athletic Director** Gary Hedin

# Grant Union Prospectors



## VARSITY ROSTER

No.	Name	Pos.	Yr.	Ht.
1	Alcie Moore	DS/S	11	5-5
2	Mariah Moulton	OH	12	5-6
4	McKeely Miller	MB/OP	11	5-8
5	Trinity Hutchison	MB	11	5-9
6	Baylee Combs	S	10	5-5
7	Taylor Allen	OH/DS	10	5-8
8	Reagan Shelley	OP	12	5-8
9	Kori Jo Girvin	S	11	5-7
10	Hailie Wright	S	11	5-5
11	Sydney Brockway	OH	11	5-5
12/3	Whitney McClellan	L	12	5-3
13	Kaylee Wright	MB	11	5-5
14	Kaytlyn Wells	MB	10	5-9
15	Shaine Madden	OH/DS	10	5-7

## SCHEDULE (25-1)

Date	Opponent	Result
8/25	vs. Crane	W 3-0
8/26	vs. Weston-McEwen	W 2-0
8/26	vs. Pilot Rock	W 2-0
8/26	vs. Burns	W 2-0
9/2	@ Crane	W 2-0
9/2	@ Imbler	W 2-0
9/2	vs. Weston-McEwen	W 2-0
9/5	vs. Culver	L 2-3
9/9	@ St. Paul	W 2-1
9/9	@ Central Linn	W 2-0
9/9	@ Weston-McEwen	W 2-0
9/15	@ Enterprise	W 2-0
9/15	@ Baker	W 2-0
9/19	@ Burns	W 3-0
9/23	vs. Enterprise	W 3-0
9/23	vs. Elgin	W 3-0
9/26	vs. La Grande	W 3-1
9/28	@ Imbler	W 3-1
9/29	vs. Union	W 3-0
10/7	@ Enterprise	W 3-0
10/7	@ Elgin	W 3-0
10/13	vs. Imbler	W 3-0
10/14	@ Union	W 3-0
10/17	vs. Burns	W 3-0
10/21	vs. Imbler	W 3-0
10/28	vs. Myrtle Point	W 3-0
11/3	vs. Monroe	

**League** 2A-6 (2014-2017) Wapiti League  
**Location** John Day  
**Mascot** Prospectors  
**Colors** Scarlet, Black, White

**Superintendent** Curt Shelley  
**Principal** Ryan Gerry  
**Athletic Director** Jason Miller



**Head Coach** Shae Speth  
**Assistant** Shanna Northway, Rhonda  
**Coaches** McCumber

# Heppner Mustangs



## VARSITY ROSTER

No.	Name	Pos.	Yr.	Ht.
1	Sydney Wilson	L/DS	9	
2	Reiah Waite	S/DS	12	
4	Sophie Grant	S/MB	12	
10	Jacee Currin	S/OH	11	
11	Shayna Osmin	OH	12	
12	Morgan Correa	OH/RS	12	
14	Tresslyn McCurry	MB	10	
16	Nicole Propheter	OH	10	
18	Jenna McCullough	MB	11	
25	Claire Grieb	S/DS	11	
28	Madison Combe	MB/OH	11	

## SCHEDULE (19-8)

Date	Opponent	Result
8/26	vs. Crane	W 2-0
8/26	vs. Burns	L 1-2
8/26	vs. Pilot Rock	L 0-2
8/29	@ Dufur	W 3-0
8/29	vs. Vernonia	W 3-0
9/2	vs. Enterprise	W 2-0
9/2	vs. Weston-McEwen	L 0-2
9/5	vs. South Wasco County	W 3-2
9/5	vs. Irrigon	W 3-0
9/9	vs. McLoughlin	W 2-0
9/9	vs. Powder Valley	W 2-0
9/9	@ Griswold	W 2-1
9/14	vs. Culver	L 0-3
9/15	vs. Onalaska (WA) {5-7}	W 2-0
9/15	@ Brewster (WA) {18-1}	L 0-2
9/19	vs. Pilot Rock	W 3-0
9/26	@ Weston-McEwen	W 3-1
9/28	vs. Stanfield	W 3-0
10/3	@ Culver	W 3-2
10/5	@ Pilot Rock	W 3-1
10/7	vs. St. Paul	L 0-3
10/7	@ Kennedy	L 1-3
10/12	vs. Weston-McEwen	W 3-2
10/17	@ Stanfield	W 3-0
10/21	@ Pilot Rock	W 3-0
10/21	@ Culver	L 0-3
10/28	@ Reedsport	W 3-0
11/3	@ Culver	

**League** 2A-5 (2014-2017) Columbia Basin Conference

**Location** Heppner

**Mascot** Mustangs

**Colors** Blue, Gold

**Head Coach** Mindy Wilson

**Superintendent** Dirk Dirksen

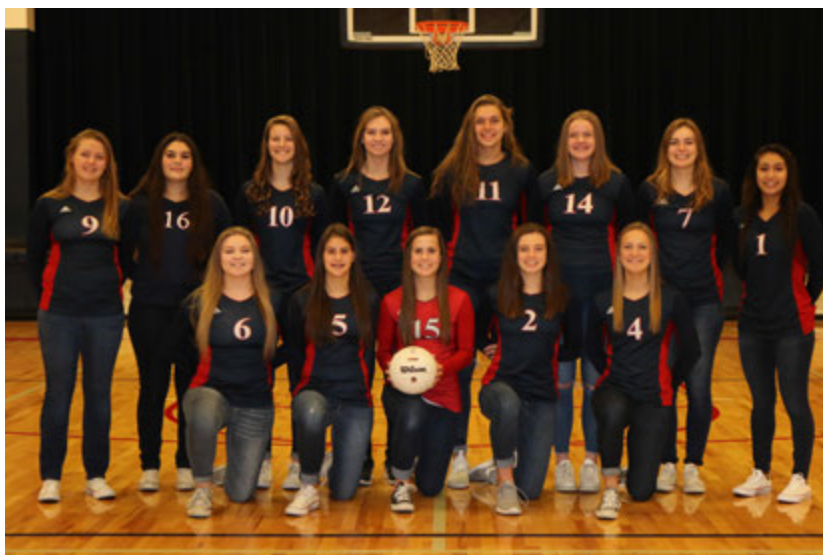
**Principal** Matt Combe

**Athletic Director** Greg Grant





# Kennedy Trojans



## VARSITY ROSTER

No.	Name	Pos.	Yr.	Ht.
1	Ibeth Gomez	S	10	5-3
2	Ellie Cantu	S	9	5-6
4	Elise Suing	DS	9	5-4
5	Kelsey Kleinschmit	DS	9	5-6
6	Makayla Massey	DS/OP	11	5-4
7	Hannah Arritola	OH/DS	12	5-7
9	Kaylee Brown	OP/OH	12	5-8
10	Kalyssa Kleinschmit	RS/S	11	5-9
11	Sophia Carley	MB	10	6-1
12	Tressa Riedman	MB	12	5-11
14	Hallie Sprauer	OH/DS	11	5-10
15	Hailey Arritola	L	9	5-4
16	Lilly English	RS	11	5-6

## SCHEDULE (23-5)

Date	Opponent	Result
8/26	vs. City Christian	W 2-0
8/26	@ Columbia Christian	W 2-0
8/26	vs. Horizon Christian, Tualatin	W 2-1
8/29	vs. Country Christian	W 3-0
8/31	@ Salem Acad.	L 1-3
9/7	vs. Central Linn	L 2-3
9/9	vs. Stayton	W 2-1
9/9	vs. Astoria	L 0-2
9/12	@ St. Paul	L 0-3
9/14	vs. East Linn Christian Acad.	W 3-0
9/16	vs. Gervais	W 2-0
9/16	vs. Delphian	W 2-0
9/16	vs. Bonanza	W 2-0
9/19	@ Santiam	W 3-0
9/21	@ Regis	W 3-0
9/25	vs. Reedsport	W 3-0
9/26	vs. Western Mennonite	W 3-0
10/3	@ Central Linn	W 3-2
10/5	vs. St. Paul	W 3-2
10/7	vs. Heppner	W 3-1
10/7	vs. Weston-McEwen	L 2-3
10/10	@ East Linn Christian Acad.	W 3-0
10/12	vs. Santiam	W 3-0
10/16	vs. Regis	W 3-0
10/18	@ Western Mennonite	W 3-0
10/21	vs. St. Paul	W 3-1
10/24	@ Central Linn	W 3-2
10/28	vs. Oakridge	W 3-0
11/3	vs. Gaston	

**League** 2A-2 (2014-2017) Tri-River Conference  
**Location** Mt Angel  
**Mascot** Trojans  
**Colors** Red, White, Blue

**Superintendent** Troy Stoops  
**Principal** Sean Aker  
**Athletic Director** Kevin Moffatt



**Head Coach** Laura Beyer  
**Assistant Coaches** Ron Beyer, Scott Sanders, Carl Beyer

# Monroe Dragons



## VARSITY ROSTER

No.	Name	Pos.	Yr.	Ht.
3/10	Ashley Sutton	S/L	9	5-7
4	Rya Ripley	S	10	5-5
5	Madison Ballard	OH/L	12	5-6
8	Maddie O'Hare	MB	12	5-10
9	Callie Horning	MB	10	5-11
11	Mirtha Lopez	S	10	5-5
13	Brook Boyer-Capps	MB	12	5-8
15	Rebekah Ballard	S	12	5-6
16	Elizabeth DeHaven	OH	12	5-8
18	Cassidy Thompson	OH	12	5-8
22	Peyton Greene	OH	12	5-9
25	Tyler Warden	MB	10	5-11

## SCHEDULE (22-6)

Date	Opponent	Result
8/24	vs. Junction City	W 3-1
8/24	@ Harrisburg	L 1-3
8/29	@ East Linn Christian Acad.	W 3-0
8/31	@ Bandon	W 3-0
8/31	@ Glide	W 3-0
9/5	vs. Canyonville Christian Acad.	W 3-0
9/9	@ Culver	L 0-2
9/9	vs. Colton	W 2-0
9/12	@ Crow	W 3-0
9/14	@ Riddle	W 3-0
9/16	vs. McKenzie	W 2-0
9/16	@ Oakridge	W 2-1
9/16	@ Pleasant Hill	L 0-2
9/19	vs. Oakridge	W 3-1
9/21	vs. St. Paul	L 2-3
9/23	vs. Santiam Christian	L 0-3
9/26	@ Oakland	W 3-0
9/28	@ Canyonville Christian Acad.	W 3-0
9/30	vs. Lost River	W 3-0
9/30	vs. Bonanza	L 0-3
10/5	vs. Riddle	W 3-0
10/7	@ Lost River	W 3-0
10/7	@ Bonanza	W 3-0
10/10	vs. Crow	W 3-0
10/17	vs. Oakland	W 3-0
10/19	@ Oakridge	W 3-1
10/21	vs. Bonanza	W 3-1
10/28	vs. Union	W 3-1
11/3	@ Grant Union	

**League** 2A-3 (2014-2017) Mountain View Conference  
**Location** Monroe  
**Mascot** Dragons  
**Colors** Navy, Burnt Orange

**Superintendent** Bill Crowson  
**Principal** Beau Sisneros  
**Athletic Director** Beau Sisneros



**Head Coach** Angie Thompson  
**Assistant Coaches** Nancy Burnett, Kaitlyn Rictor  
**Manager** Felicity Thayer

# St. Paul Buckaroos



## VARSITY ROSTER

No.	Name	Pos.	Yr.	Ht.
1	Logan Robinson	OH/DS	12	5-6
4	Erin Counts	MB	10	5-9
5	Hailey Farrell	OP	11	5-5
6	Mercedes Smith	OP/MB	11	5-5
7	Presley Smith	DS	12	5-3
8	Marley Martinez	S/OP	12	5-7
9	Megan Tuck	DS/OH	11	5-4
10	Haley Scott	MB	12	5-9
11	Karlee Southerland	S/OP	10	5-6
12	Alexis Goughnour	DS/S	12	5-4
13	Jordan Caldwell	S/OP	9	5-5
14	Isabelle Wyss	OH/DS	10	5-6
22/2	Emma Connor	L/MB	11	5-6

## SCHEDULE (16-8)

Date	Opponent	Result
9/5	@ Santiam	W 3-0
9/7	@ Regis	W 3-0
9/9	vs. Grant Union	L 1-2
9/9	@ Oakridge	W 2-1
9/9	@ North Douglas	L 1-2
9/12	vs. Kennedy	W 3-0
9/14	@ Central Linn	L 2-3
9/16	@ Dufur	W 3-0
9/16	@ Culver	L 1-3
9/19	vs. Western Mennonite	W 3-0
9/21	@ Monroe	W 3-2
9/26	@ East Linn Christian Acad.	W 3-0
9/28	vs. Santiam	W 3-0
9/30	@ Creswell	L 0-2
10/3	vs. Regis	W 3-0
10/5	@ Kennedy	L 2-3
10/7	@ Heppner	W 3-0
10/7	vs. Weston-McEwen	W 3-2
10/10	vs. Central Linn	L 1-3
10/12	@ Western Mennonite	W 3-0
10/18	vs. East Linn Christian Acad.	W 3-0
10/21	vs. Regis	W 3-0
10/21	@ Kennedy	L 1-3
10/28	vs. Vernonia	W 3-0
11/3	@ Central Linn	

**League** 2A-2 (2014-2017) Tri-River Conference  
**Location** St Paul  
**Mascot** Buckaroos  
**Colors** Blue, White, Columbia Blue



**Head Coach** Lesli Hiller  
**Assistant Coach** Rachel Thompson

**Superintendent** Joseph M. Wehrli  
**Principal** Tony Smith  
**Athletic Director** Tony Smith



OSAA / U.S. Bank / Les Schwab Tires  
**2017 2A, 1A VOLLEYBALL STATE CHAMPIONSHIPS**  
November 3-4, 2017  
Ridgeview High School  
4555 SW Elkhorn Street, Redmond, OR 97756



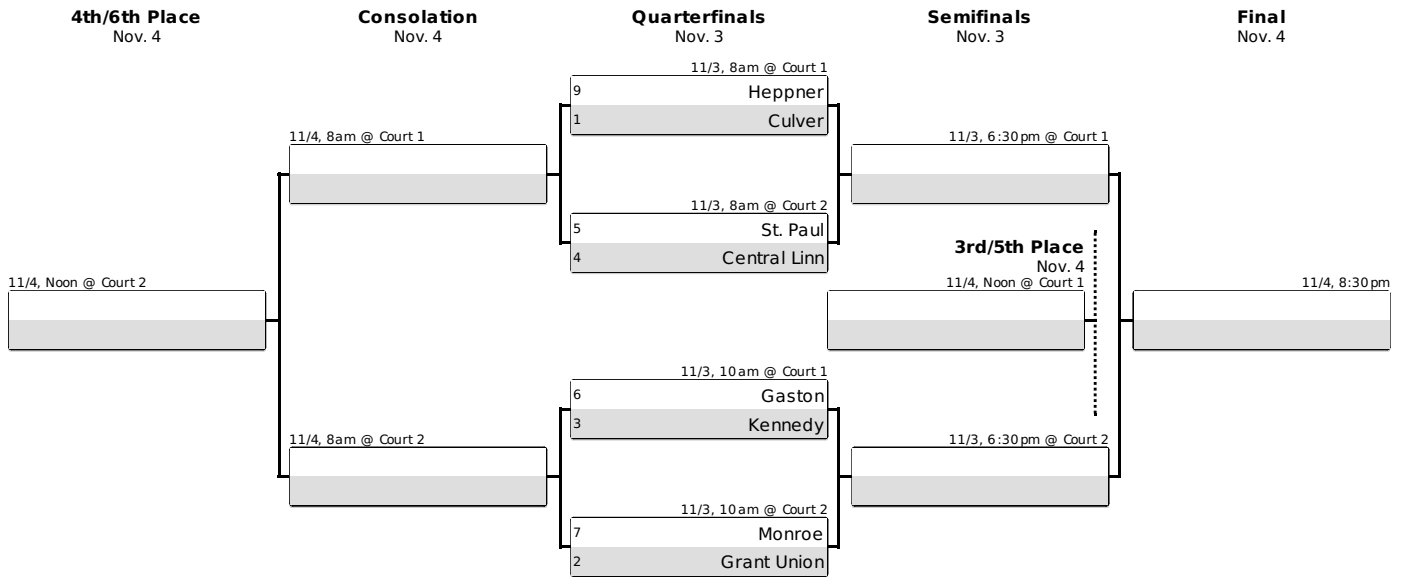
## CHAMPIONSHIP SCHEDULE

<u>DATE / SESSION</u>	<u>TIME</u>	<u>CLASSIFICATION</u>	<u>EVENT / MATCH</u>
<b><u>Friday, November 3</u></b>			
Session 1	7am	2A	Coaches Meeting
	8am	2A	Quarterfinals
	10am	2A	Quarterfinals
Session 2	Noon	1A	Coaches Meeting
	1:15pm	1A	Quarterfinals
	3:15pm	1A	Quarterfinals
Session 3	6:30pm	2A	Semifinals
	8:30pm	1A	Semifinals
<b><u>Saturday, November 4</u></b>			
Session 4	8am	2A	Consolation Semifinals
	10am	1A	Consolation Semifinals
	Noon	2A Court 1	Third Place
	Noon	2A Court 2	Consolation Final
	2:15pm	1A Court 1	Third Place
	2:15pm	1A Court 2	Consolation Final
Session 5	6pm	1A	Championship
	8:30pm	2A	Championship



# 2017 OSAA / U.S. Bank / Les Schwab Tires 2A Volleyball State Championship

## November 3-4, Ridgeview High School, Redmond



**Round 1**  
Oct. 28

10/28, 1pm	
16 Imbler	0
1 Culver	3
25-4, 25-12, 25-17	

10/28, Noon	
9 Heppner	3
8 Reedsport	0
27-25, 25-21, 25-20	

10/28, 2pm	
12 Vernonia	0
5 St. Paul	3
25-18, 25-20, 25-15	

10/28, 2:30pm	
13 Delphian	0
4 Central Linn	3
25-21, 25-11, 25-15	

**Round 1**  
Oct. 28

10/28, 1pm	
0 Oakridge	14
3 Kennedy	3
25-16, 25-23, 25-16	

10/28, 2pm	
0 Bonanza	11
3 Gaston	6
26-24, 26-24, 25-15	

10/28, 1pm	
1 Union	10
3 Monroe	7
25-27, 25-21, 25-8, 25-10	

10/28, 2pm	
0 Myrtle Point	15
3 Grant Union	2
25-15, 25-4, 25-8	

The better ranked team shall be the designated home team (bottom team in the matchup).

**OSAA REGULAR DISTRICTS  
2017-2018  
(includes Adjusted 2015-16 ADM)**

<b>6A</b>	<b>(52)</b>
<b>1258+</b>	

<b>6A-1 - PIL</b>	<b>(9)</b>
*Benson Techmen	750
Cleveland Warriors	1478
Franklin Quakers	1346
Grant Generals	1376
*Jefferson Democrats	417
Lincoln Cardinals	1605
*Madison Senators	909
*Roosevelt Roughriders	742
*Wilson Trojans	1225

<b>6A-2 - Metro League</b>	<b>(10)</b>
Aloha Warriors	1794
Beaverton Beavers	1654
Century Jaguars	1437
Glencoe Crimston Tide	1471
Jesuit Crusaders	1294
Liberty Falcons	1372
Mountainside Mavericks	NEW
Southridge Skyhawks	1614
Sunset Apollos	2123
Westview Wildcats	2508

<b>6A-3 - Mt. Hood Conference</b>	<b>(8)</b>
Barlow Bruins	1528
Centennial Eagles	1477
*Central Catholic Rams	891
Clackamas Cavaliers	2297
David Douglas Scots	2499
Gresham Gophers	1369
Oregon City Pioneers	1940
Reynolds Raiders	2142

<b>6A-4 - Three Rivers League</b>	<b>(9)</b>
Canby Cougars	1316
Lake Oswego Lakers	1307
*Lakeridge Pacers	1126
Newberg Tigers	1414
Sherwood Bowmen	1569
St. Mary's Academy Blues	1435
Tigard Tigers	1771
Tualatin Timberwolves	1770
West Linn Lions	1707

<b>6A-5 - Greater Valley Conference</b>	<b>(9)</b>
Forest Grove Vikings	1654
McKay Scots	1768
McMinnville Grizzlies	1793
McNary Celtics	1681
North Salem Vikings	1404
South Salem Saxons	1578
Sprague Olympians	1490
West Albany Bulldogs	1264
West Salem Titans	1559

<b>6A-6 - Southwest Conference</b>	<b>(7)</b>
Grants Pass Cavemen	1526
North Medford Black Tornado	1477
Roseburg Indians	1394
Sheldon Irish	1359
South Eugene Axemen	1345
South Medford Panthers	1545
Willamette Wolverines	1198

<b>5A</b>	<b>(33)</b>
<b>1257-676</b>	

<b>5A-1 - Northwest Oregon Conference</b>	<b>(8)</b>
Hillsboro Spartans	1195
La Salle Prep Falcons	679
Milwaukie / Arts Academy Mustangs	1152
Parkrose Broncos	774
Putnam Kingsmen	1034
Sandy Pioneers	1215
St. Helens Lions	842
Wilsonville Wildcats	1077

<b>5A-2 - Mid-Willamette Conference</b>	<b>(8)</b>
Central Panthers	859
Corvallis Spartans	1117
Crescent Valley Raiders	937
Dallas Dragons	918
Lebanon Warriors	1052
Silverton Foxes	1149
South Albany Rebels	1158
Woodburn Bulldogs	1256

<b>5A-3 - Midwestern League</b>	<b>(8)</b>
Ashland Grizzlies	940
Churchill Lancers	1022
Crater Comets	1158
Eagle Point Eagles	911
*Marist Catholic Spartans	563
North Eugene Highlanders	771
Springfield Millers	1078
Thurston Colts	1174

<b>5A-4 - Intermountain Conference</b>	<b>(5)</b>
**Bend Lava Bears	1468
Mountain View Cougars	1225
Redmond Panthers	808
Ridgeview Ravens	854
**Summit Storm	1391

<b>5A-5 - Columbia River Conference</b>	<b>(4)</b>
Hermiston Bulldogs	1240
Hood River Valley Eagles	1171
Pendleton Buckaroos	779
The Dalles Riverhawks	706

<b>4A</b>	<b>(40)</b>
<b>675-331</b>	

<b>4A-1 - Cowapa League</b>	<b>(6)</b>
Astoria Fishermen	511
Banks Braves	358
Scappoose Indians	721
Seaside Seagulls	375
Tillamook Cheesemakers	533
Valley Catholic Valiants	384

<b>4A-2 - Tri-Valley Conference</b>	<b>(6)</b>
Corbett Cardinals	379
Crook County Cowboys	703
Estacada Rangers	474
Gladstone Gladiators	631
Madras White Buffaloes	641
Molalla Indians	662

<b>4A-3 - Far West League</b>	<b>(6)</b>
Brookings-Harbor Bruins	449
Douglas Trojans	352
Marshfield Pirates	682
North Bend Bulldogs	491
Siuslaw Vikings	347
South Umpqua Lancers	336

<b>4A-4 - Oregon West Conference</b>	<b>(6)</b>
Cascade Cougars	683
Newport Cubs	550
North Marion Huskies	530
Philomath Warriors	444
Stayton Eagles	608
Yamhill-Carlton Tigers	311

<b>4A-5 - Sky-Em League</b>	<b>(6)</b>
Cottage Grove Lions	648
Elmira Falcons	345
Junction City Tigers	492
Sisters Outlaws	404
Sutherlin Bulldogs	357
Sweet Home Huskies	639

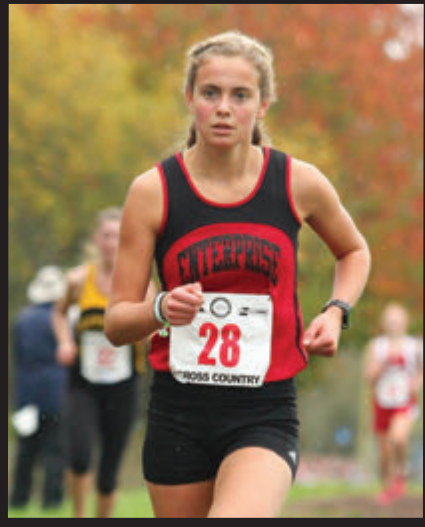
<b>4A-6 - Skyline Conference</b>	<b>(6)</b>
Henley Hornets	581
Hidden Valley Mustangs	535
Klamath Union Pelicans	640
Mazama Vikings	572
North Valley Knights	462
Phoenix Pirates	621

<b>4A-7 - Greater Oregon League</b>	<b>(4)</b>
Baker Bulldogs	434
La Grande Tigers	539
McLoughlin Pioneers	400
Ontario Tigers	541

\*school choosing to play above assigned classification

\*\*school moved due to geographical exception

\*\*\*school moved due to Petition to Play Down



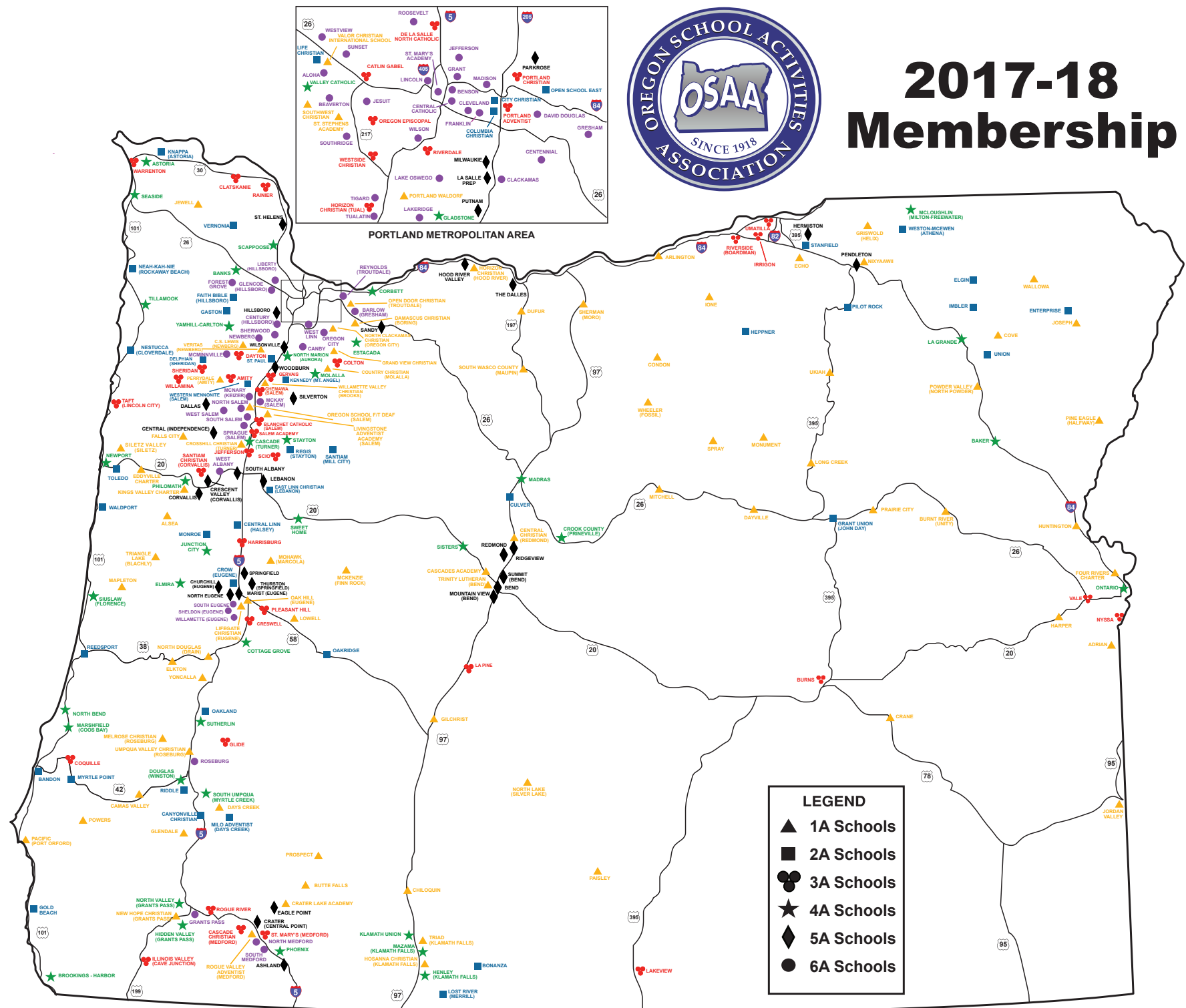
The OSAA Foundation Congratulates all OSAA Participants



To help ensure the Future of these Student Athletes and their Activities,  
contact the OSAA Foundation to see how you can help today. [www.osaafoundation.org](http://www.osaafoundation.org)



# 2017-18 Membership







# **TEAMWORK. RESPONSIBILITY. ACCOMPLISHMENT.**



Whether students are shooting for the hoop, singing in choir, marching in time or aiming for the end zone, they are practicing skills that will serve them well in school, on the job and in life.

Les Schwab is proud of the players and performers of the OSAA. We believe in supporting students as they learn about commitment, hard work and serving the community — values the company believes in. We're glad to be a title sponsor of the OSAA, helping students get the chance to participate in the state playoffs and championships.

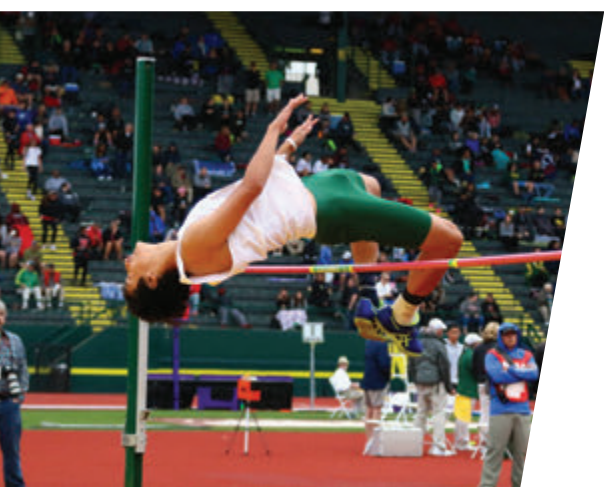


THANK YOU FOR BEING HERE AND FOR SUPPORTING OUR GREAT YOUNG PEOPLE.



**Doing the right thing matters.®**

[www.LesSchwab.com](http://www.LesSchwab.com)



**OSAA REGULAR DISTRICTS  
2017-2018  
(includes Adjusted 2015-16 ADM)**

<b>3A</b> 330-191	<b>(41)</b>	<b>2A</b> 190-90	<b>(44)</b>	<b>1A</b> 89-	<b>(82)</b>	<b>1A (cont.)</b> 89-	
<b>3A-1 - Lewis &amp; Clark League</b>	<b>(9)</b>	<b>2A-1 - Northwest League</b>	<b>(11)</b>	<b>1A-1 - The Valley 10 League</b>	<b>(10)</b>	<b>1A-5 - Mountain Valley League</b>	<b>(12)</b>
Catlin Gabel Eagles	308	City Christian Lions	148	Country Christian Cougars	52	Butte Falls Loggers	47
Clatskanie Tigers	216	Columbia Christian Knights	115	Damascus Christian Eagles	60	Cascades Academy Steelhead	35
De La Salle North Catholic Knights	308	Delphian School Dragons	162	Grand View Christian Eagles	56	Central Christian Tigers	58
Oregon Episcopal Aardvarks	313	Faith Bible Falcons	113	North Clackamas Christian Saints	64	Chiloquin Panthers	76
Portland Adventist Cougars	284	Gaston Greyhounds	177	Open Door Christian Huskies	48	Gilchrist Grizzlies	56
Portland Christian Royals	175	Knappa Loggers	121	Portland Waldorf Wolfpack	67	Hosanna Christian Lions	68
Rainier Columbians	285	Life Christian Lions	113	Southwest Christian Wildcats	57	North Lake Cowboys	65
Riverdale Mavericks	241	Neah-Kah-Nie Pirates	201	St. Stephens Academy	41	Paisley Broncos	36
Warrenton Warriors	228	Nestucca Bobcats	130	Trinity Academy Thunder	28	Prospect Cougars	61
		Open School East Goats	90	Valor Christian Knights	24	Rogue Valley Adventist Red Tail Hawks	33
		Vernonia Loggers	156			Triad Timber Wolves	50
						Trinity Lutheran Saints	54
<b>3A-2 - West Valley League</b>	<b>(8)</b>	<b>2A-2 - Tri-River Conference</b>	<b>(7)</b>	<b>1A-2 - Casco League</b>	<b>(10)</b>	<b>1A-6 - Big Sky League</b>	<b>(10)</b>
Amity Warriors	260	Central Linn Cobras	169	C.S. Lewis Watchmen	49	Arlington Honkers	44
Dayton Pirates	279	East Linn Christian Eagles	142	Crosshill Christian Eagles	75	Condon Blue Devils	35
*Horizon Christian Hawks (TUAL)	151	Kennedy Trojans	152	Falls City Mountaineers	52	Dufur Rangers	80
Santiam Christian Eagles	230	Regis Rams	142	Jewell Bluejays	39	Horizon Christian Hawks (HR)	68
Sheridan Spartans	211	Santiam Wolverines	137	Kings Valley Charter Eagles	44	Ione Cardinals	68
***Taft Tigers	359	St. Paul Buckaroos	90	Livingstone Adventist Academy Lions	63	Mitchell Loggers	27
Westside Christian Eagles	220	Western Mennonite Pioneers	150	Oregon School f/t Deaf Panthers	49	Sherman Huskies	67
Willamina Bulldogs	232			Perrydale Pirates	87	South Wasco County Redsides	67
				Veritas School Vanguard	52	Spray Eagles	17
				Willamette Valley Christian Warriors	52	Wheeler Falcons	24
<b>3A-3 - PacWest Conference</b>	<b>(7)</b>	<b>2A-3 - Mountain View Conference</b>	<b>(10)</b>	<b>1A-3 - Mountain West League</b>	<b>(9)</b>	<b>1A-7 - Old Oregon League</b>	<b>(8)</b>
Blanchet Catholic Cavaliers	225	Bonanza Antlers	122	Alsea Wolverines	46	Cove Leopards	73
Chemawa Braves	236	Canyonville Christian Pilots	134	Eddyville Charter Eagles	48	Echo Cougars	82
Colton Vikings	201	Crater Lake Academy	107	Lowell Devils	87	Griswold Grizzlies	58
Gervais Cougars	281	Crow Cougars	93	Mapleton Sailors	42	Joseph Eagles	59
Jefferson Lions	259	Lost River Raiders	126	McKenzie Eagles	51	Nixyaawii Eagles	41
Salem Academy Crusaders	235	Milo Adventist Mustangs	94	Mohawk Indians	58	Pine Eagle Spartans	46
Scio Loggers	257	Monroe Dragons	125	Oakland Oakers	58	Powder Valley Badgers	69
		Riddle Irish	95	Oak Hill School Falcons	44	Wallowa Cougars	58
				Siletz Valley Warriors	61		
				Triangle Lake Lakers	65		
<b>3A-4 - Mountain Valley Conference</b>	<b>(6)</b>	<b>2A-4 - Sunset Conference</b>	<b>(6)</b>	<b>1A-4 - Skyline League</b>	<b>(11)</b>	<b>1A-8 - High Desert League</b>	<b>(12)</b>
Coquille Red Devils	216	Bandon Tigers	199	Camas Valley Hornets	63	Adrian Antelopes	67
Creswell Bulldogs	342	Gold Beach Panthers	143	Days Creek Wolves	72	Burnt River Bulls	25
Glide Wildcats	181	Myrtle Point Bobcats	164	Elkton Elks	79	Crane Mustangs	49
Harrisburg Eagles	272	Reedsport Braves	165	Glendale Pirates	69	Dayville Tigers	20
***La Pine Hawks	324	Toledo Boomers	148	Melrose Christian	12	Four Rivers Community School Falcons	60
Pleasant Hill Billies	294	Walldport Irish	146	New Hope Christian Warriors	78	Harper Hornets	34
				North Douglas Warriors	78	Huntington Locomotives	18
				Pacific Pirates	58	Jordan Valley Mustangs	22
<b>3A-5 - Eastern Oregon League</b>	<b>(6)</b>	<b>2A-5 - Columbia Basin Conference</b>	<b>(5)</b>	Powers Cruisers	34	Long Creek Mountaineers	14
Burns Hilanders	222	Culver Bulldogs	181	Umpqua Valley Christian Monarchs	45	Monument Tigers	19
Irrigon Knights	209	Heppner Mustangs	97	Yoncalla Eagles	73	Prairie City Panthers	36
Nyssa Bulldogs	277	Pilot Rock Rockets	98			Ukiah Cougars	28
Riverside Pirates	211	Stanfield Tigers	119				
Umatilla Vikings	318	Weston-McEwen Tiger Scots	175				
Vale Vikings	225						
		<b>2A-6 - Wapiti League</b>	<b>(5)</b>				
		Elgin Huskies	87				
		Enterprise Outlaws	115				
		Grant Union Prospectors	148				
		Imbler Panthers	97				
		Union Bobcats	107				
<b>Full Member Charter Schools</b>		<b>Full Member School with No Assigned District</b>					
Sheridan Japanese Charter School	28	Logos School	31				

\*school choosing to play above assigned classification

\*\*school moved due to geographical exception

\*\*\*school moved due to Petition to Play Down



Oregon School Activities Association  
25200 SW Parkway Avenue, Suite 1  
Wilsonville, OR 97070  
503.682.6722 fax: 503.682.0960 <http://www.osaa.org>



## 2017 VOLLEYBALL STATE CHAMPIONSHIP OFFICIALS

### 6A, 5A

Jennifer L'Amoreaux ..... Greater Portland  
Amy Contreras ..... Greater Portland  
Alicia Provost..... Greater Portland  
Lizann Schultz..... Greater Portland  
Brian Guymon ..... Three Rivers  
Gail Winden.....Salem  
Bill Macias-Valadez ..... Southern Oregon  
Daren Yockey .....Emerald Empire

### 4A, 3A

Mike Lehman ..... Greater Portland  
Tracy Schofield ..... Greater Portland  
Kenny Gerig..... Mid-Valley  
Carolee Murphy .....Klamath County  
Lovena Magalsky.....Malheur  
Jossalynn Wright .....Salem  
Steve Beard .....Emerald Empire  
Stan Williamson ..... Mid-Valley

### 2A, 1A

Krysta Marlow ..... Blue Mountain  
Shanna Langley ..... Tri-County  
Tonia Brewer ..... Douglas County  
Brooke Toy ..... Southwest Oregon  
Dave Haggerty.....Salem  
Dorothy Smith..... Blue Mountain  
Amanda Payne ..... Mid-Columbia  
Angie Malone ..... Northeast Oregon

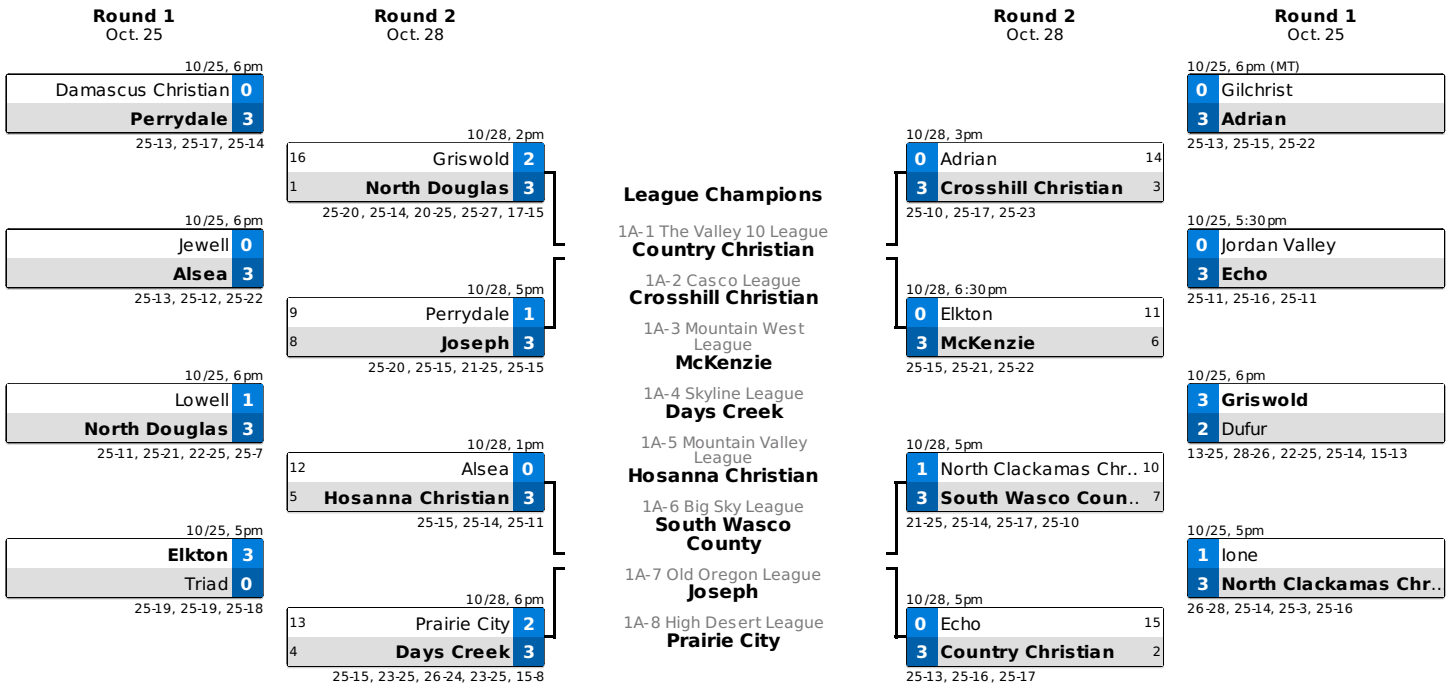
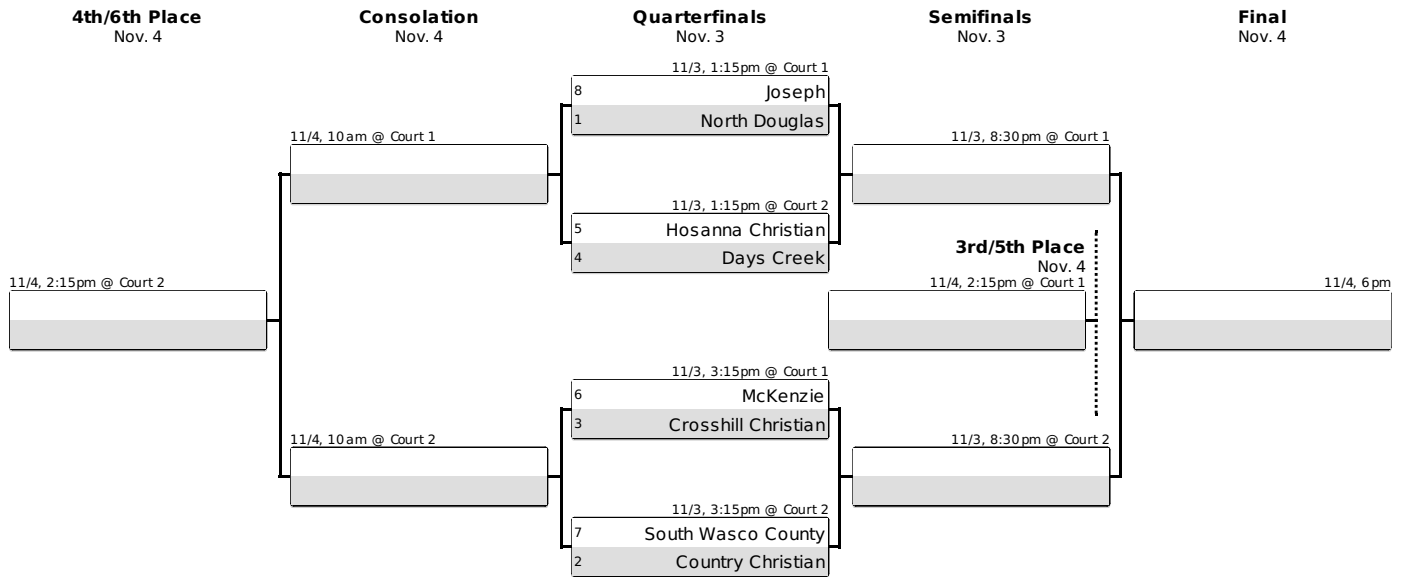
### OFFICIALS COORDINATORS

6A, 5A: Debi Hanson, Commissioner ..... Greater Portland  
4A, 3A: Darla Huxel, Commissioner ..... Blue Mountain  
2A, 1A: Leslie Benton ..... Mid-Valley

**OSAA VOLLEYBALL STATE RULES INTERPRETER:** Debi Hanson

# 2017 OSAA / U.S. Bank / Les Schwab Tires 1A Volleyball State Championship

November 3-4, Ridgeview High School, Redmond



The better ranked team shall be the designated home team (bottom team in the matchup).



# Country Christian Cougars



## VARSITY ROSTER

No.	Name	Pos.	Yr.	Ht.
2	Sophia Griffith	OH	10	5-6
3	Debby Grandle	L	12	5-8
6	Meghan McGrath	OH	12	5-8
7	Maddy Weyer	S	12	5-7
10	Sierra Ross	MB	12	5-10
11	Anna Farner	L	12	5-6
13	Jasmine Griffith	S	12	5-5
14	Luisa Amaya	MB	11	5-8
15	Kristin Kendall	MB	10	5-7
16	Mollie Lewandowski	MB	12	5-10
17	Katie Sandberg	S	11	5-6
21	Jera Warrington	S	10	5-5
22	Kendall Halverson	OH	11	5-7
23	Sarah Phillips	OH	11	5-8

## SCHEDULE (27-5)

Date	Opponent	Result
8/25	vs. Ione	W 2-0
8/25	vs. Perrydale	W 2-0
8/25	vs. Trinity Lutheran	W 2-0
8/25	vs. Crosshill Christian	W 2-0
8/25	vs. North Douglas	W 2-0
8/26	vs. Willamette Valley Christian	W 2-0
8/26	vs. Powder Valley	W 2-0
8/26	vs. Joseph	W 2-0
8/26	vs. Hosanna Christian	W 2-0
8/29	@ Kennedy	L 0-3
9/7	@ Reedsport	W 3-0
9/9	vs. Colton	W 2-0
9/9	vs. Culver	L 0-2
9/12	vs. Valor Christian	W 3-0
9/12	vs. Damascus Christian	W 3-1
9/14	@ Southwest Christian	W 3-0
9/19	vs. Open Door Christian Acad.	W 3-0
9/21	vs. North Clackamas Christian	W 3-0
9/26	@ Portland Waldorf	W 3-0
9/29	@ TBD	
9/30	@ St Margarets Episcopal (CA) {11..	L 0-2
9/30	vs. Maranatha (CA) {3-15}	W 2-1
9/30	vs. Enumclaw (WA) {5-10}	L 0-2
9/30	vs. Acalanes (CA) {7-10}	L 0-2
10/6	@ Damascus Christian	W 3-0
10/10	@ North Clackamas Christian	W 3-0
10/13	@ Open Door Christian Acad.	W 3-0
10/16	vs. Southwest Christian	W 3-0
10/17	vs. Perrydale	W 3-2
10/17	vs. Portland Waldorf	W 3-0
10/19	@ Valor Christian	W 3-0
10/21	vs. North Clackamas Christian	W 3-0
10/28	vs. Echo	W 3-0
11/3	vs. South Wasco County	

**League** 1A-1 (2014-2017) The Valley 10 League  
**Location** Molalla  
**Mascot** Cougars  
**Colors** Navy, Gold



**Head Coach** Janin McGrath  
**Assistant Coaches** Tricia Halverson, Cara Grandle  
**Manager** Mark Grandle

**Principal** Tom Axmaker  
**Athletic Director** Janin McGrath

# Crosshill Christian Eagles



## VARSITY ROSTER

No.	Name	Pos.	Yr.	Ht.
8	Lauren Campbell	DS/OH	10	5-3
9	Meghan Bartel	MB/S	10	5-9
11	Kaylee Bell	MB	10	5-11
12	Olivia Schaffner	S	10	5-5
13	Bethany Trull	DS/RS	11	5-5
15	Abby Bartel	OH/MB	11	5-9
16	Grace Treadwell	L	10	5-2
19	Macy Spaulding	DS/RS	11	5-5
20	Lindsey Mendez	RS/OH	12	5-6
21	Ellie Schanz	S/OH	11	5-9
22	Maddie Kumpula	OH/RS	11	5-6

## SCHEDULE (24-4)

Date	Opponent	Result
8/25	@ North Douglas	W 2-0
8/25	vs. Hosanna Christian	W 2-0
8/25	vs. Powder Valley	W 2-0
8/25	@ Country Christian	L 0-2
8/26	vs. Joseph	W 2-0
8/26	@ South Wasco County	W 2-0
8/26	@ Ione	W 2-0
8/26	vs. Trinity Lutheran	W 2-0
8/31	@ Livingstone Adventist Acad.	W 3-0
9/1	vs. South Wasco County	L 2-3
9/1	@ Trinity Lutheran	W 3-0
9/8	vs. Falls City	W 3-0
9/12	vs. Jewell	W 3-0
9/14	@ Willamette Valley Christian	W 3-0
9/15	vs. C.S. Lewis Acad.	W 3-0
9/19	@ Perrydale	W 3-1
9/26	vs. Livingstone Adventist Acad.	W 3-0
9/28	@ Falls City	W 3-0
10/3	vs. Willamette Valley Christian	W 3-0
10/5	@ Jewell	W 3-0
10/10	vs. Triangle Lake	W 3-0
10/11	@ North Douglas	L 0-3
10/12	vs. Perrydale	L 2-3
10/14	vs. Chiloquin	W 2-0
10/14	vs. Days Creek	W 2-1
10/17	@ C.S. Lewis Acad.	W 3-0
10/21	@ Perrydale	W 3-2
10/28	vs. Adrian	W 3-0
11/3	vs. McKenzie	

**League** 1A-2 (2014-2017) Casco League  
**Location** Turner  
**Mascot** Eagles  
**Colors** Red, Blue, White

**Principal** Adam Kronberger  
**Athletic Director** Molly Cotter



**Head Coach** Julie Bennett  
**Assistant Coach** Becky Schanz

# Days Creek Wolves



## VARSITY ROSTER

No.	Name	Pos.	Yr.	Ht.
2	Carlie Dossman	OH/MB	12	5-8
3	Keziah Perez	OH/RS	11	5-8
4	Lexi Jackson	DS/L	11	5-4
5	Jazzlin Mackey	OH	11	5-5
7	Jolene Crume	MB	10	5-6
9	Lori Jackson	MB	11	5-9
10	Cyndal Brown	L/DS	11	5-3
12	Moriah Michaels	L/OH	10	5-6
14	Winter Woodruff	RS	12	5-9
15	Kassidee Thompson	S	10	5-5
23	Brianna Kewish	MB	11	5-10
32	Kyla Crume	S/OH	11	5-7
34	Megan Kruzic	S	9	5-4

## SCHEDULE (29-5)

Date	Opponent	Result
8/24	@ Glendale	W 3-0
8/24	@ Butte Falls / Crater Lake Char..	W 3-0
8/29	@ Myrtle Point	W 3-1
8/29	vs. Riddle	W 3-0
8/31	vs. Glendale	W 3-0
9/5	@ Yoncalla	W 3-0
9/9	@ Glendale	W 2-0
9/9	vs. Camas Valley	W 2-0
9/9	vs. Elkton	W 2-0
9/9	vs. Umpqua Valley Christian / Me..	W 2-0
9/9	vs. Butte Falls / Crater Lake Cha..	W 2-0
9/12	@ North Douglas	L 2-3
9/14	vs. Elkton	W 3-2
9/19	@ Umpqua Valley Christian / Me..	W 3-0
9/21	@ Camas Valley	W 3-0
9/23	vs. Glide	W 2-1
9/23	@ McKenzie	W 3-0
9/23	vs. Culver	L 0-2
9/26	vs. Yoncalla	W 3-0
9/28	@ New Hope Christian	W 3-0
9/30	@ Camas Valley	W 2-0
9/30	vs. Glide	L 1-2
10/3	@ Powers	W 3-0
10/5	vs. North Douglas	L 2-3
10/10	vs. Umpqua Valley Christian / Me..	W 3-0
10/12	@ Elkton	W 3-0
10/14	@ Triad	W 2-0
10/14	@ Chiloquin	Canceled
10/14	@ Crosshill Christian	L 1-2
10/17	vs. Hosanna Christian	W 3-2
10/17	vs. McKenzie	W 3-0
10/19	vs. New Hope Christian	W 3-0
10/21	@ Powers	W 3-0
10/21	@ North Douglas	W 3-0
10/28	vs. Prairie City	W 3-2
11/3	vs. Hosanna Christian	

**League** 1A-4 (2014-2017) Skyline League  
**Location** Days Creek  
**Mascot** Wolves  
**Colors** Red, White, Gold

**Superintendent** Dr. Mark Angle  
**Principal** Dr. Mark Angle  
**Athletic Director** Ron Dunn



# Hosanna Christian Lions



## VARSITY ROSTER

No.	Name	Pos.	Yr.	Ht.
1/10	Meredith Bush	L	11	
2/1	Kya Nelson	OH	11	
4	Ellie Niehus	OH/MB	9	
5	Miriam Levesque	MB	11	
6	Kirsten Tuttle	RS	12	
7	Jade Jackson	MB	9	
8	Hannah Ledgerwood	S	9	
9	Kinsley Baker	OH/S	9	
11	Lauren Cooper	DS	10	
12/13	Julia Brancacio	OH/MB	11	

## SCHEDULE (23-8)

Date	Opponent	Result
8/25	vs. North Douglas	L 1-2
8/25	@ Crosshill Christian	L 0-2
8/25	@ Joseph	W 2-0
8/25	vs. Powder Valley	W 2-1
8/26	vs. South Wasco County	W 2-0
8/26	@ Ione	W 2-0
8/26	vs. Perrydale	L 1-2
8/26	@ Country Christian	L 0-2
8/29	vs. Klamath Union	L 2-3
9/2	vs. Burns	W 2-1
9/2	@ Klamath Union	W 2-1
9/7	vs. St. Mary's, Medford	W 3-0
9/7	@ Bonanza	L 2-3
9/8	vs. Butte Falls / Crater Lake Char. ...	W 3-0
9/15	vs. Central Christian	W 3-0
9/16	vs. Modoc (CA) {11-13}	W 2-0
9/16	vs. Burns	L 0-2
9/19	@ Prospect Char.	W 3-0
9/22	@ Chiloquin	W 3-0
9/23	@ Lakeview	W 3-0
9/29	vs. Gilchrist	W 3-0
9/30	vs. Trinity Lutheran	W 3-0
10/5	@ Triad	W 3-0
10/7	vs. Paisley	W 3-0
10/12	@ North Lake	W 3-0
10/14	@ Rogue Valley Adventist Acad.	W 3-1
10/17	@ Days Creek	L 2-3
10/17	vs. McKenzie	W 3-0
10/21	vs. Trinity Lutheran	W 3-0
10/21	vs. Triad	W 3-0
10/28	vs. Alsea	W 3-0
11/3	@ Days Creek	

**League** 1A-5 (2014-2017) Mountain Valley League  
**Location** Klamath Falls  
**Mascot** Lions  
**Colors** Teal, Black, White

**Principal** Don Wonsley  
**Athletic Director** Tony Bush



**Head Coach** Sue Thompson  
**Assistant** Taylor Thompson, Holly Rice,  
**Coaches** Krys Baker



# Joseph Eagles



## VARSITY ROSTER

No.	Name	Pos.	Yr.	Ht.
	Annie Story		12	
2	Madelyn Nelson		10	
3	Camille Crenshaw		10	
5	Tori Suto		11	
6	Emma Hite		11	
7	Sabrina Albee		9	
10	Alexis Sykora		12	
13	Rylee Wilcox		10	
14	Natalie Gorham		11	
16	Kana Oliver		11	

## SCHEDULE (21-9)

Date	Opponent	Result
8/25	vs. South Wasco County	L 0-2
8/25	@ Perrydale	L 0-2
8/25	vs. Hosanna Christian	L 0-2
8/25	@ Willamette Valley Christian	W 2-0
8/26	@ Crosshill Christian	L 0-2
8/26	@ Ione	W 2-0
8/26	@ Country Christian	L 0-2
8/26	vs. North Douglas	W 2-1
9/2	@ Prairie City	L 1-2
9/2	@ Cove	W 2-0
9/2	vs. Adrian	W 2-0
9/7	@ Imbler	W 3-1
9/8	vs. Cove	W 3-1
9/9	@ Nixyaawii	W 3-0
9/12	@ Griswold	W 3-2
9/14	@ Pine Eagle	W 3-0
9/21	vs. Powder Valley	L 2-3
9/22	vs. Wallowa	W 3-0
9/29	@ Powder Valley	L 2-3
10/3	@ Wallowa	W 3-0
10/6	@ Cove	W 3-1
10/7	vs. Echo	W 3-1
10/7	vs. Griswold	W 3-0
10/12	vs. Nixyaawii	W 3-0
10/13	@ Echo	L 2-3
10/14	vs. Pine Eagle	W 3-0
10/17	vs. Union	W 3-2
10/21	vs. Griswold	W 3-1
10/21	vs. Echo	W 3-0
10/28	vs. Perrydale	W 3-1
11/3	@ North Douglas	

**League** 1A-7 (2014-2017) Old Oregon League  
**Location** Joseph  
**Mascot** Eagles  
**Colors** Navy, Vegas Gold

**Superintendent** Lance Homan  
**Principal** Sherri Kilgore  
**Athletic Director** Jason Crenshaw



**Head Coach** Jill Hite  
**Assistant Coach** Elsa Steen

# McKenzie Eagles



## VARSITY ROSTER

No.	Name	Pos.	Yr.	Ht.
1	Kanyen Kamrath	L/L	11	5-3
3	Paige Lowry	RS	12	5-2
4	Brook Caulley	DS/DS	10	4-10
6	Ashley Pettner	DS/DS	9	5-1
7	Cassidy Campbell	MB/MB	11	5-4
8	Sophia Brownlee	S	9	5-1
9	Lexie Quirk	RS	9	5-3
11	Katelynn Caulley	S	12	5-2
12	Anna McNutt	S	11	4-10
13	Jade Hayes	OH/OH	11	5-4
14	Katie Meyer	S/S	10	5-2
15	Lola Seiler	MB/MB	10	5-7
17	Paula McGlasson	OH	9	5-4
20	Danielle Melcher	MB/MB	10	5-9
21	Samantha Hanger	MB/MB	10	5-9
22	Katrina Drummond	MB	10	5-9
24	Chloe Erdahl	OH	11	5-3

## SCHEDULE (23-5)

Date	Opponent	Result
8/31	@ Alsea	W 3-2
9/7	@ Mohawk	Canceled
9/8	@ Gilchrist	Canceled
9/12	vs. Siletz Valley	W 3-0
9/14	vs. Eddyville Char.	W 3-0
9/16	@ Monroe	L 0-2
9/16	vs. Bandon	W 2-0
9/16	vs. Myrtle Point	W 2-0
9/19	@ Oak Hill	W 3-1
9/21	@ North Lake	W 3-0
9/21	vs. Paisley	W 3-0
9/23	vs. Days Creek	L 0-3
9/23	vs. Bonanza	W 2-0
9/23	vs. North Douglas	L 1-2
9/25	@ Mohawk	W 3-2
9/26	vs. Lowell	W 3-1
9/28	vs. Triangle Lake	W 3-0
10/3	@ Triangle Lake	W 3-0
10/5	vs. Alsea	W 3-0
10/5	vs. Mohawk	W 3-0
10/7	@ Eddyville Char.	W 3-0
10/7	vs. Oak Hill	W 3-0
10/10	@ Lowell	W 3-1
10/12	vs. Mapleton	W 3-0
10/14	vs. Siletz Valley	W 3-0
10/14	@ Mapleton	W 3-0
10/17	@ Hosanna Christian	L 0-3
10/17	@ Days Creek	L 0-3
10/21	vs. Alsea	W 3-2
10/28	vs. Elkton	W 3-0
11/3	@ Crosshill Christian	

**League** 1A-3 (2014-2017) Mountain West League  
**Location** Finn Rock  
**Mascot** Eagles  
**Colors** Green, Gold



**Head Coach** Dan Brenner  
**Assistant Coaches** Mary Lipp, Samantha Winningham

**Superintendent** Jim Thomas  
**Principal** Lane Tompkins  
**Athletic Director** Lane Tompkins

# North Douglas Warriors



## VARSITY ROSTER

No.	Name	Pos.	Yr.	Ht.
1	Katelyn Andes	L	12	5-3
2	Nicki Derrick	S/OH	10	5-5
3	Abby Whipple	OH	11	5-8
5	Natalie Draeger	OH/MB	10	5-9
6	Bailey Holcomb	S/DS	10	5-5
9	Natalie Thompson	OH	9	5-6
10	Amy Dooley	S	12	5-5
11	Lilly Downie	MB/RS	12	5-7
12	Hope Morgan	OH	10	5-7
13	Rilie-Jo Olds	MB	10	5-9
15	Arianna Helgren	OH	11	5-9

## SCHEDULE (28-6)

Date	Opponent	Result
8/25	vs. Crosshill Christian	L 0-2
8/25	@ Hosanna Christian	W 2-1
8/25	@ Ione	W 2-0
8/25	vs. Perrydale	W 2-0
8/25	@ Country Christian	L 0-2
8/26	@ Trinity Lutheran	W 2-0
8/26	vs. South Wasco County	W 2-1
8/26	@ Powder Valley	W 2-0
8/26	@ Joseph	L 1-2
8/31	@ Elkton	W 3-0
9/5	@ New Hope Christian	W 3-0
9/7	vs. Glendale	W 3-0
9/9	vs. Weston-McEwen	L 0-2
9/9	vs. Crow	W 2-0
9/9	vs. St. Paul	W 2-1
9/12	vs. Days Creek	W 3-2
9/14	vs. Umpqua Valley Christian / Melr..	W 3-0
9/16	vs. Perrydale	W 3-1
9/16	vs. Trinity Lutheran	W 3-0
9/19	@ Yoncalla	W 3-0
9/21	vs. Powers	W 3-0
9/23	vs. Reedsport	W 2-0
9/23	@ McKenzie	W 2-1
9/23	@ Culver	L 0-3
9/28	vs. Elkton	W 3-0
10/3	vs. Camas Valley	W 3-0
10/5	@ Days Creek	W 3-2
10/10	vs. Yoncalla	W 3-0
10/11	vs. Crosshill Christian	W 3-0
10/12	@ Umpqua Valley Christian / Melro..	W 3-0
10/21	vs. Elkton	W 3-0
10/21	vs. Days Creek	L 0-3
10/25	vs. Lowell	W 3-1
10/28	vs. Griswold	W 3-2
11/3	vs. Joseph	

**League** 1A-4 (2014-2017) Skyline League  
**Location** Drain  
**Mascot** Warriors  
**Colors** Cardinal, White

**Superintendent** John Lahley  
**Principal** Scott Yakovich  
**Athletic Director** JJ Mast



**Head Coach** Anne Campbell  
**Assistant Coach** Abby Dooley



# South Wasco County Redsides



## VARSITY ROSTER

No.	Name	Pos.	Yr.	Ht.
2	Jenna Wraught	S/L	10	5-3
3	Jacqueline Noland	OH/S	11	5-6
4	Emily Ellis	OH/S	12	5-8
5	Allie Noland	OH/S	12	5-7
6	Jade McCoy	OH	9	5-7
7	Madisen Davis	OH	11	5-5
8	Kyrsten Sprouse	OH	11	5-5
9	Anastasia Popchock	OH	12	5-6
10	Jada Myers	MB	11	5-11
13	Laurynn Davis	MB	10	5-7
14	Reese Millis	S/OH	10	5-5

## SCHEDULE (24-8)

Date	Opponent	Result
8/25	@ Joseph	W 2-0
8/25	@ Powder Valley	W 2-0
8/25	@ Willamette Valley Christian	W 2-0
8/25	vs. Trinity Lutheran	W 2-0
8/26	@ Hosanna Christian	L 0-2
8/26	@ North Douglas	L 1-2
8/26	vs. Crosshill Christian	L 0-2
8/26	@ Perrydale	L 0-2
9/1	@ Trinity Lutheran	W 3-0
9/1	@ Crosshill Christian	W 3-2
9/5	@ Heppner	L 2-3
9/5	@ Irrigon	L 0-3
9/9	vs. Perrydale	L 0-3
9/9	@ Damascus Christian	W 3-0
9/12	vs. Dufur	W 3-2
9/14	@ Mitchell / Spray	W 3-0
9/16	vs. White Salmon (WA) {7-4}	W 2-1
9/16	@ McLoughlin	W 2-0
9/16	@ Elgin	W 2-0
9/19	vs. Sherman	W 3-1
9/23	vs. Stanfield	W 2-0
9/23	vs. Condon / Wheeler	W 2-0
9/23	vs. Riverside	W 2-0
9/23	vs. Damascus Christian	W 2-0
9/28	@ Condon / Wheeler	W 3-0
10/5	@ Sherman	W 3-1
10/10	vs. Lone	W 3-0
10/12	@ Dufur	L 1-3
10/14	vs. Monument / Dayville	W 3-0
10/21	@ Sherman	W 3-0
10/21	vs. Dufur	W 3-0
10/28	vs. North Clackamas Christian	W 3-1
11/3	@ Country Christian	

**League** 1A-6 (2014-2017) Big Sky League  
**Location** Maupin  
**Mascot** Redsides  
**Colors** Green, Gold

**Superintendent** Ryan Wraught  
**Principal** Lynn Cowdrey  
**Athletic Director** Jim Hull  
**Athletic Trainer** Rory McHardy



**Head Coach** Donna Barton  
**Assistant Coach** Carly Johnson

# FEEL THE POWER OF LANE ATHLETICS

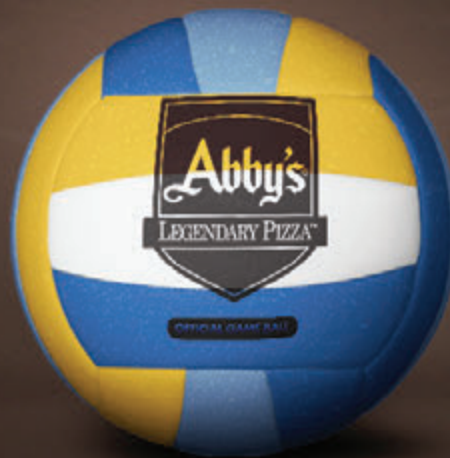


BASEBALL • BASKETBALL • CROSS COUNTRY • SOCCER • TRACK AND FIELD • VOLLEYBALL



[lanetitans.net](http://lanetitans.net)

  
**MVP**  
**MOST VALUABLE PIZZA**



**BE LEGENDARY**

ABBY'S INC., 2016



PROUD PARTNER





**THE NATION'S LEADER IN  
LIVE HIGH SCHOOL SPORTS**

Visit [www.NFHSnetwork.com](http://www.NFHSnetwork.com) To Watch





# **Northwest Sports Photography**



***PROUD TO BE THE  
OFFICIAL PHOTOGRAPHER  
OF THE OSAA STATE  
VOLLEYBALL  
CHAMPIONSHIPS***

***ACTION, TEAM AND AWARDS  
PHOTOS WILL BE AVAILABLE  
FOR VIEWING AND PURCHASE  
ONSITE AND ONLINE AT***

***WWW.4NSP.COM***

***1.800.446.5758***







PACIFIC OFFICE  
AUTOMATION

— PROBLEM SOLVED —

FOR OVER 35 YEARS

**LOCALLY OWNED,**

**NATIONALLY RECOGNIZED**

## **OUR PEOPLE MAKE TECHNOLOGY WORK.**

Document management, IT services, printers & multifunction products, and more for your digital success

Pacific Office Automation  
14747 NW Greenbrier Parkway  
Beaverton, OR 97006

(888) 896-9029  
[pacificoffice.com](http://pacificoffice.com)



**SHARP**®

HER G.P.A. IS EVEN

higher!



GET BETTER GRADES.  
PLAY HIGH SCHOOL SPORTS.

#MYREASONWHY

[MyReasonWhy.com](http://MyReasonWhy.com)

# OSAA Volleyball Championships

## State Champions Past 10 Years *(see [www.osaa.org/archives](http://www.osaa.org/archives) for a complete list of all-time state champions)*

Year	Class	State Champion (W-L)	Coach	2 <sup>nd</sup> Place (W-L)	Coach	Score	Site
2006	6A	Gresham (41-2)	Lori Anderson	Central Catholic (40-3)	Rick Lorenz	25-21, 25-12, 25-19	Chiles Center, Portland
	5A	Crook County (35-9)	Rosie Honl	Mountain View (16-2)	Jill Waskom	25-18, 25-15, 25-17	Chiles Center, Portland
	4A	North Bend (24-3)	Les Willett	Estacada (32-4)	Melanie Hambelton	28-26, 22-25, 25-21, 25-21	Lane Community College, Eugene
	3A	Burns (30-1)	Paula Toney	Gervais (25-2)	Molly McCargar	25-14, 25-22, 25-11	Lane Community College, Eugene
	2A	Portland Christian (19-2)	Angela Oxenrider	Weston-McEwen (34-5)	Shawn White	25-19, 25-18, 14-25, 25-22	Pacific University, Forest Grove
	1A	Jordan Valley (17-1)	Jacque Naegle	Griswold (17-5)	Tammie Parker	18-25, 25-21, 25-21, 13-25, 15-9	Pacific University, Forest Grove
2007	6A	West Linn (20-4)	Carl Neuberger	North Medford (31-6)	Ron Beick	25-19, 25-18, 25-22	Liberty HS, Hillsboro
	5A	Crook County (38-2)	Rosie Honl	Summit (N/A)	Jill Waskom	25-17, 25-10, 25-17	Liberty HS, Hillsboro
	4A	Sisters (17-3)	Diane Bremer	La Grande (37-5)	Teresa Dowdy	18-25, 26-24, 19-25, 25-13, 15-11	Lane Community College, Eugene
	3A	Burns (31-0)	Paula Toney	Oregon Episcopal (25-2)	Sonny Palmer	26-24, 25-17, 25-19	Lane Community College, Eugene
	2A	Portland Christian (19-1)	Jocelyn Edlin	Weston-McEwen (33-4)	Shawn White	25-17, 25-22, 15-25, 25-16	Pacific University, Forest Grove
	1A	Dufur (27-8)	Kelly Darden	Adrian (27-5)	Aimee Goss	25-21, 25-21, 25-14	Pacific University, Forest Grove
2008	6A	Jesuit (19-0)	Teresa Zimmerlee	West Linn (30-4)	Carl Neuberger	25-15, 25-13, 25-21	Liberty HS, Hillsboro
	5A	Crook County (16-1)	Rosie Honl	Mountain View ( )	Mallory Larranaga	25-18, 25-19, 23-25, 25-13	Liberty HS, Hillsboro
	4A	Central (14-1)	Claudine Mendazona	Sisters ( 19-1)	Diane Bremer	25-17, 25-11, 25-22	Lane Community College, Eugene
	3A	Sheridan (19-1)	Matt Leichty	Valley Catholic (17-4)	Nolan Hee	25-23, 25-22, 23-25, 26-24	Lane Community College, Eugene
	2A	Blanchet Catholic (33-2)	Sherrie Bashaw	Nestucca (18-1)	Lori Chitwood	26-24, 25-23, 25-21	Pacific University, Forest Grove
	1A	Imbler (19-4)	Jennifer Teeter	Griswold (27-7)	Tammie Parker	25-15, 18-25, 25-19, 25-19	Pacific University, Forest Grove
2009	6A	Central Catholic (20-0)	Rick Lorenz	Jesuit (16-1)	Teresa Zimmerlee	25-22, 21-25, 25-22, 25-22	Liberty HS, Hillsboro
	5A	Crook County (28-5)	Rosie Honl	Summit (15-2)	Jill Waskom	20-25, 25-21, 25-18, 25-17	Liberty HS, Hillsboro
	4A	Sisters (17-3)	Diane Bremer	Marist (20-8)	Shari Pimental	25-21, 25-16, 14-25, 25-19	Lane Community College, Eugene
	3A	Santiam Christian (29-2)	Kim McLain	Cascade Christian (16-1)	Sabrina Schubert	25-9, 25-16, 25-16	Lane Community College, Eugene
	2A	Blanchet Catholic (29-5)	Sherrie Bashaw	Salem Academy (26-6)	Aaron Imig	25-12, 25-23, 14-25, 25-21	Pacific University, Forest Grove
	1A	Imbler (29-3)	Jennifer Teeter	Griswold (15-5)	Tammie Parker	25-9, 25-16, 25-15	Pacific University, Forest Grove
2010	6A	Central Catholic (28-3)	Rick Lorenz	Jesuit (26-4)	Teresa Zimmerlee	25-20, 25-27, 25-22, 25-18	Liberty HS, Hillsboro
	5A	Sherwood (24-3)	Emily Gustafson	Liberty (22-4)	Bret Rickman	24-26, 26-24, 25-23, 18-25, 15-11	Liberty HS, Hillsboro
	4A	Crook County (16-8)	Rosie Honl	Banks (20-7)	Suzanne Alley	25-14, 16-25, 25-18, 25-21	Lane Community College, Eugene
	3A	Santiam Christian (32-2)	Kim McLain	St. Mary's (18-3)	Colleen Christensen	25-17, 25-23, 25-15	Lane Community College, Eugene
	2A	Weston-McEwen (30-2)	Shawn White	Faith Bible (26-2)	Rachael Rethwill	25-15, 25-14, 25-16	Pacific University, Forest Grove
	1A	Cove (21-4)	Darcy Johnson	Powder Valley (21-4)	Lasa Baxter	18-25, 25-12, 26-24, 11-25, 15-13	Pacific University, Forest Grove
2011	6A	Central Catholic (33-0)	Rick Lorenz	Jesuit (22-8)	Teresa Zimmerlee	25-19, 25-17, 25-19	Liberty HS, Hillsboro
	5A	Summit (21-7)	Jill Waskom	West Albany (21-4)	Kelli Backer	22-25, 12-25, 25-19, 25-19, 15-12	Liberty HS, Hillsboro
	4A	Crook County (27-3)	Rosie Honl	Hidden Valley (23-5)	Robert Jackson	25-22, 25-14, 25-22	Lane Community College, Eugene
	3A	Burns (30-2)	Paula Toney	Willamina (24-4)	Carrie Zimbrick	25-18, 25-16, 25-16	Lane Community College, Eugene
	2A	Days Creek (27-2)	Ron Dunn	Portland Christian (22-5)	Anna Wilson	25-23, 25-21, 26-24	Pacific University, Forest Grove
	1A	lone (32-0)	Dawn Eynetich	Powder Valley (24-2)	Lasa Baxter	25-21, 23-25, 25-16, 16-25, 15-10	Pacific University, Forest Grove
2012	6A	Jesuit (28-5)	Teresa Zimmerlee	Roseburg (28-10)	Bruce Meyers	25-23, 22-25, 19-25, 25-19, 15-8	Liberty HS, Hillsboro
	5A	West Albany (28-1)	Kelli Backer	Churchill (23-3)	Martine Wodke	25-17, 20-25, 25-17, 25-14	Liberty HS, Hillsboro
	4A	Crook County (23-4)	Rosie Honl	Astoria (19-7)	Angee Hunt	25-8, 25-18, 25-22	Lane Community College, Eugene
	3A	Santiam Christian (28-5)	Kim McLain	Corbett (26-5)	Angela Davis	25-12, 25-18, 25-10	Lane Community College, Eugene
	2A	Culver (26-5)	Randi Viggiano	Days Creek (32-4)	Ron Dunn	13-25, 25-22, 16-25, 25-22, 15-11	Ridgeview HS, Redmond
	1A	Powder Valley (24-2)	Lasa Baxter	Imbler (23-5)	Jennifer Teeter	25-22, 15-25, 25-21, 20-25, 15-12	Ridgeview HS, Redmond
2013	6A	Lakeridge (26-2)	Wendy Stammer	Central Catholic (29-3)	Rick Lorenz	31-29, 23-25, 25-12, 25-22	Liberty HS, Hillsboro
	5A	West Albany (27-3)	Kelli Backer	Willamette (17-6)	Brian Wodke	25-21, 25-11, 25-15	Liberty HS, Hillsboro
	4A	Crook County (26-5)	Rosie Honl	Cascade (24-2)	Cristina Williams	25-15, 25-17, 25-12	Lane Community College, Eugene
	3A	Santiam Christian (33-2)	Kim McLain	Valley Catholic (23-7)	Becky Kemper	25-10, 25-19, 25-10	Lane Community College, Eugene
	2A	Days Creek (30-2)	Ron Dunn	Reedsport (20-8)	James Hixenbaugh	25-20, 25-15, 25-18	Ridgeview HS, Redmond
	1A	Imbler (27-0)	Jennifer Teeter	Condon / Wheeler (25-3)	Maria Clemens	25-20, 25-16, 25-18	Ridgeview HS, Redmond
2014	6A	Jesuit (31-0)	Teresa Zimmerlee	Central Catholic (25-5)	Rick Lorenz	15-25, 25-18, 25-11, 25-15	Liberty HS, Hillsboro
	5A	St. Helens (21-4)	Tom Ray	La Salle Prep (23-4)	Liz Banta	26-24, 23-25, 25-19, 25-17	Liberty HS, Hillsboro
	4A	Sisters (26-2)	Miki McFadden	Banks (29-2)	Diana Herb, Suzanne Alley	26-24, 25-19, 25-16	Lane Community College, Eugene
	3A	Santiam Christian (28-2)	Kim McLain	Creswell (24-3)	Anna Baltrusch	25-20, 18-25, 24-26, 25-23, 18-16	Lane Community College, Eugene
	2A	Burns (23-5)	Paula Toney	Grant Union (18-11)	Shae Speth	25-19, 25-19, 25-19	Ridgeview HS, Redmond
	1A	Country Christian (25-6)	Janin McGrath	Dufur (28-4)	Kelly Darden	25-18, 25-18, 21-25, 25-15	Ridgeview HS, Redmond
2015	6A	Jesuit (32-0)	Teresa Zimmerlee	Central Catholic (27-4)	Rick Lorenz	22-25, 25-23, 25-13, 25-22	Liberty HS, Hillsboro
	5A	Summit (18-6)	Jill Wascom	La Salle Prep (23-4)	Liz Banta	25-22, 25-22, 25-18	Liberty HS, Hillsboro
	4A	Banks (27-3)	Suzanne Alley	Sisters (27-2)	Jason Myhre	26-24, 25-19, 27-25	Forest Grove HS
	3A	Vale (27-2)	Shannon Steele	Creswell (27-1)	Anna Baltrusch	20-25, 18-25, 25-15, 25-23, 15-11	Forest Grove HS
	2A	Burns (28-3)	Paula Toney	Culver (30-4)	Randi Viggiano	25-12, 25-14, 25-20	Ridgeview HS, Redmond
	1A	Country Christian (26-3)	Janin McGrath	Hosanna Christian (25-4)	Sue Thompson	25-16, 25-10, 25-14	Ridgeview HS, Redmond
2016	6A	Central Catholic (25-5)	Rick Lorenz	Clackamas (20-9)	Darcy McMurray	26-24, 25-13, 25-9	Liberty HS, Hillsboro
	5A	Bend (17-8)	Kristin Cooper	Lebanon (19-5)	Jordan Swanson	25-19, 25-23, 25-14	Liberty HS, Hillsboro
	4A	Sisters (26-3)	Rod Jones	Crook County (29-4)	Rosie Honl	25-17, 22-25, 25-20, 25-21	Forest Grove HS
	3A	Cascade Christian (31-1)	Rob Kleker	Creswell (24-8)	Anna Baltrusch	25-23, 25-20, 25-23	Forest Grove HS
	2A	Weston-McEwen (23-11)	Shawn White	Imbler (28-5)	Jennifer Teeter	25-19, 25-16, 25-22	Ridgeview HS, Redmond
	1A	Country Christian (30-2)	Janin McGrath	North Douglas (27-4)	Anne Campbell	25-17, 20-25, 25-20, 25-21	Ridgeview HS, Redmond



I AM a Champion.  
I wear THE RING.



Jostens is the official ring provider for the Oregon School Activities Association.

Your determination and hard work have made you a champion! Whether you're an individual or a part of a team, you deserve to wear that status proudly.



In addition to the Official OSAA Champion Ring program, Jostens also offers fully customizable rings with endless design options. Please contact your Jostens representative if you are interested in creating a custom team ring.



To order, call 1.800.839.7125 or go to [jostens.com/osaa](http://jostens.com/osaa).





# UNSHAKABLE AT HIGH SPEEDS.

NIKE AIR ZOOM STRUCTURE 18



HIGHLY RESPONSIVE  
NIKE ZOOM AIR CUSHIONING  
IN FOREFOOT DELIVERS  
A CRISP, QUICK TOE-OFF

TRIPLE-DENSITY  
DYNAMIC SUPPORT  
SYSTEM DRAMATICALLY  
INCREASES STABILITY

Long before he was a member of Nike's Oregon Project—even before he needed to shave—Galen Rupp realized that the key to reeling in records and medals wasn't some killer workout, but the ability to string thousands of those workouts together over the span of several years. So instead of chasing every shortcut to victory, he stuck with what worked—from mileage to workouts to his beloved Air Zoom Structures. And what has this ability to steadily build speed gotten him? A duffle bag full of national championships and records, and the first medal at 10,000m for an American man in 48 years.

Similarly, the Nike Air Zoom Structure has spent the last two-plus decades debunking the notion that stable meant slow—constantly pushing to make itself

lighter, smoother and more responsive without sacrificing any of its stability. So it makes sense that Rupp, a world-class overpronator, would gravitate to the Air Zoom Structure from the very beginning, running nearly all of his 120 miles a week in a shoe as focused on gaining speed over long distances as he is. This latest version answered Galen's call to make it more stable by adding a third, high-density foam to the existing Dynamic Support system. But even as we beefed up the stability we kept the shoe light and lean, with a streamlined mesh upper and lightweight Flywire cables that add support while still letting the foot move. Which is good, because the forefoot Zoom Air cushioning provides responsive snap that gets you moving in a hurry.

Between now and 2016, Rupp will basically live in the Air Zoom Structure, burning through thousands of miles in and around Nike WHQ in his quest to step up to the top of the podium. With this much riding on it, thank goodness the shoe's as good as he is at going so fast for so long.

**GALEN RUPP**  
10,000M SILVER MEDALIST

THE RUN DEPT.  
NIKE WORLD HEADQUARTERS  
BEAVERTON, OREGON

NIKE.COM/RUNNING

# “ I bet I can” usually wins that bet.



There are those who wish and those who do. At U.S. Bank, we offer competitive products and services that will help you do. Because when you feel confident in your plans and secure that you don't have to do it alone, the impossible suddenly becomes, well, possible.

PERSONAL | BUSINESS | WEALTH MANAGEMENT



Find your possible at a U.S. Bank branch,  
call 800.825.BANK (2265),  
or visit [usbank.com/possible](http://usbank.com/possible)

the POWER of POSSIBLE.™



Investment products are:

NOT FDIC INSURED | MAY LOSE VALUE | NOT BANK GUARANTEED | NOT A DEPOSIT | NOT INSURED BY ANY FEDERAL GOVERNMENT AGENCY



Credit products offered by U.S. Bank National Association and subject to normal credit approval. Deposit products offered by U.S. Bank National Association. Member FDIC.  
©2017 U.S. Bank 170021sm 2/17

"World's Most Ethical Companies" and "Ethisphere" names and marks are registered trademarks of Ethisphere LLC.





Title Sponsor



Title Sponsor



Official Balls



The Oregonian OREGONLIVE  
Oregonian Cup



Apparel/Footwear



Retail Sporting Goods



HEALTH  
Player of the Game



PACIFIC OFFICE AUTOMATION  
— PROBLEM SOLVED —  
Radio Network



Academic All-State



Official Beverage



Television/Streaming



School Team Websites



Merchandise Partners



LEGENDARY PIZZA™  
Team Resource Partner



Media Partners